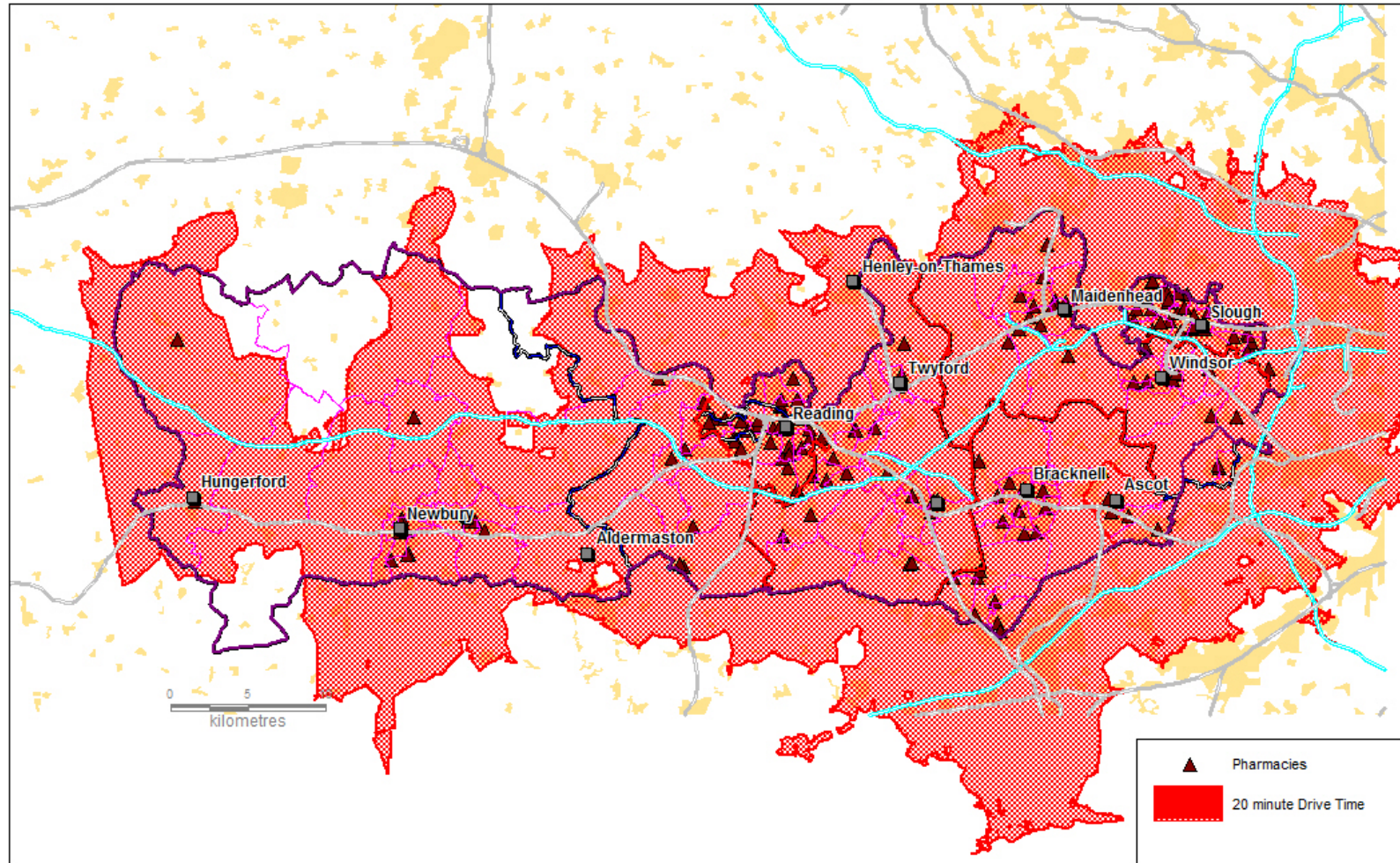


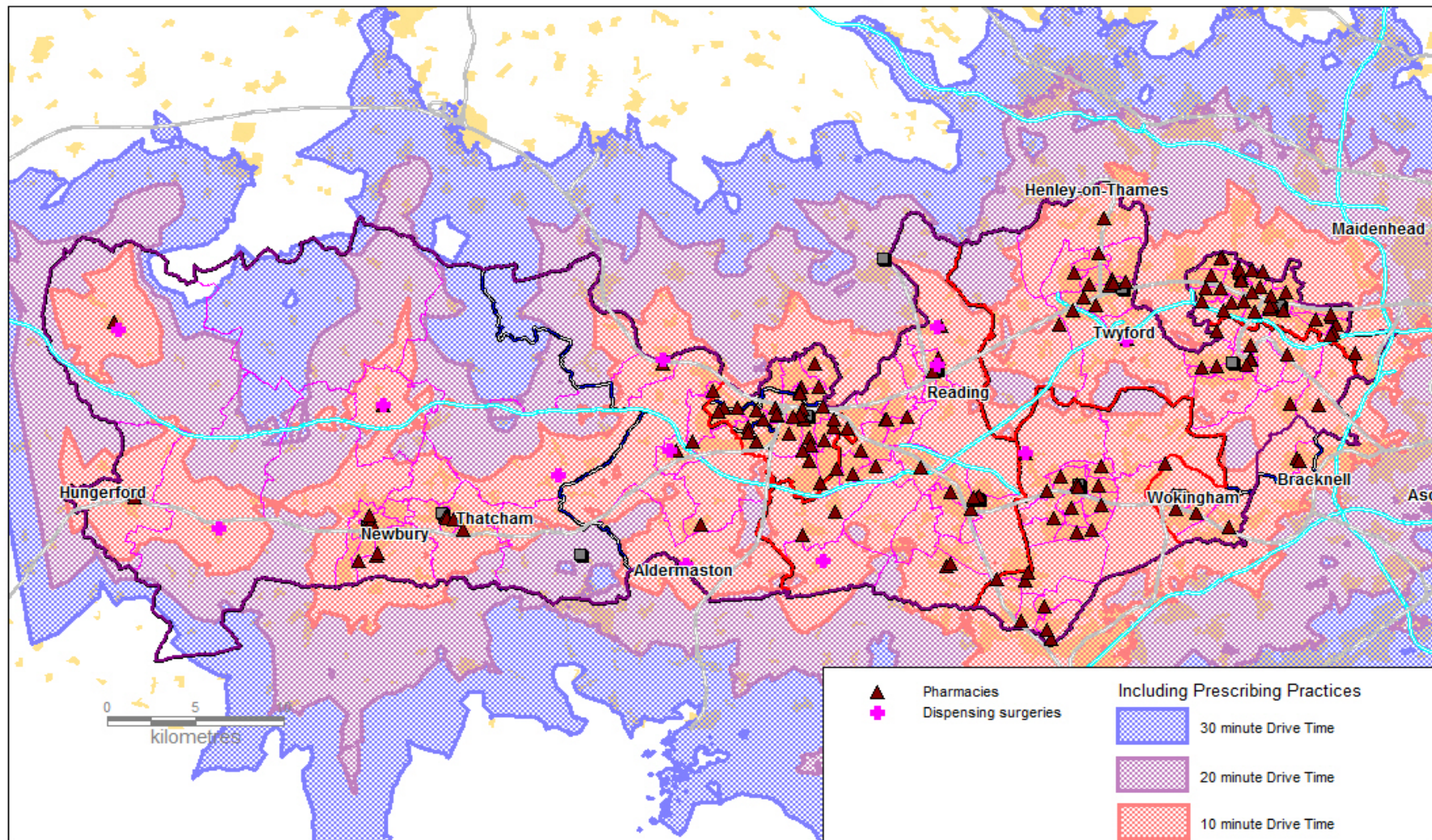
Berkshire - Pharmacy Access



Berks_PNA_Apr14_v1.wor 15/05/2014 Sid Beauchant BHFT

Reproduced from OS data by permission of Ordnance Survey, on behalf of the Controller of Her Majesty's Stationery Office (Licence No. OSKWFG1110), NAVTEQ data by permission of NAVTEQ Corporation Licence No. NVMM0611, NVMM0612) GeoPlan data by permission of Geoplan (Licence No. GPKW9912) © Crown Copyright - 2014 All rights reserved

Berkshire - Pharmacy Access



Reproduced from OS data by permission of Ordnance Survey, on behalf of the Controller of Her Majesty's Stationery Office (Licence No. OSKWFG1110), NAVTEQ data by permission of NAVTEQ Corporation Licence No. NVMM0611, NVMM0612) GeoPlan data by permission of Geoplan (Licence No. GPKW9912) © Crown Copyright - 2014 All rights reserved

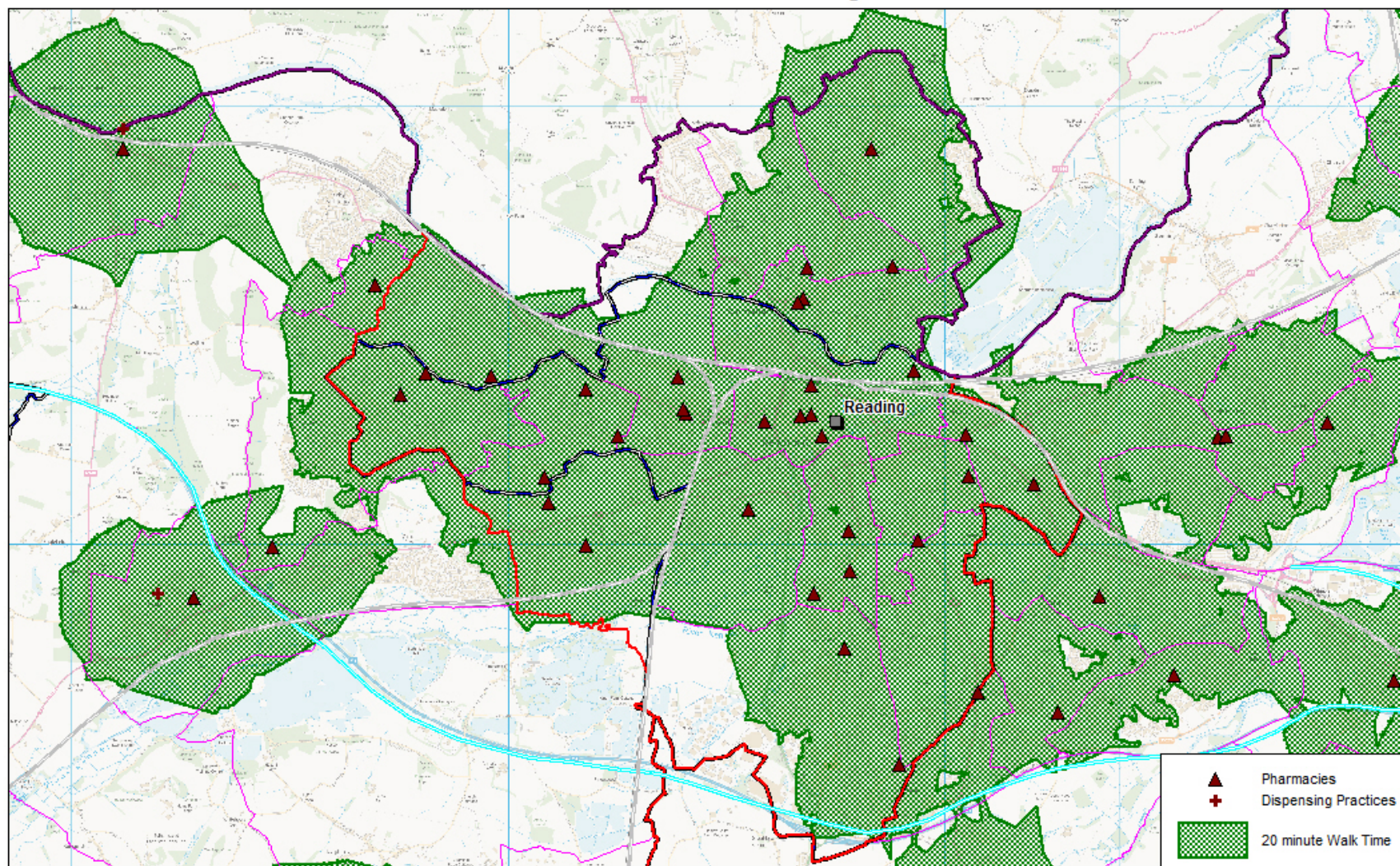
Berks_PNA_Aug14_DT_v2.wor 17/12/2014 Sid Beauchant BHFT

Opening Times

CODE	ADDRESS	POSTCODE	TOWN	TRADING NAME	OPENING HOURS - Saturday	OPENING HOURS - Sunday
FGD71	71 Basingstoke Road	RG2 0ER	Reading	Basingstoke Pharmacy Limited	9:00-14:00	Closed
FT293	Honey End Lane	RG30 4EL	Reading	Asda Stores Ltd	7:00-22:00	10:00-16:00
FDT21	47-48 Broad Street	RG1 2AE	Reading	Boots the Chemists	8:00-18:00	11:00-17:00
FE816	Unit 7, Brunel Arcade	RG1 1LT	Reading	Boots the Chemists	7:00-19:00	Closed
FFY65	Unit 5 Upper Ground Level	RG1 2AH	Reading	Boots the Chemists	9:00-19:00	11:00-17:00
FMV40	2 Lundy Lane	RG30 2RR	Reading	Fittleworth Medical Ltd	Closed	Closed
FQP38	Oxford Road Pharmacy	RG30 1AD	Reading	Oxford Road Pharmacy	8:00-23:59	8:00-20:00
FEK05	Milman Road Health Centre	RG2 0AY	Reading	Lloydspharmacy	Closed	Closed
FGW06	266-268 Oxford Road	RG30 1AD	Reading	Lloydspharmacy	9:00-13:00; 14:00-17:30	Closed
FK294	351-353 Oxford Road	RG30 1AY	Reading	Lloydspharmacy	9:00-14:00	Closed
FTK19	195 London Road	RG1 3NY	Reading	Lloydspharmacy	9:00-13:00	Closed
FVH81	105 Wokingham Road	RG6 1LN	Reading	Lloydspharmacy	9:00-13:00	Closed
FWT36	68 Christchurch Road	RG2 7AZ	Reading	Lloydspharmacy	8:30-13:00; 14:00-17:00	Closed
FXQ15	277 Basingstoke Road	RG2 0JA	Reading	Lloydspharmacy	9:00-14:00	Closed
FA288	85-87 Erleigh Road	RG1 5NW	Reading	Erleigh Road Pharmacy	9:00-17:00	Closed
FLG15	534 Northumberland Avenue	RG2 8NY	Reading	Whitley Wood Pharmacy	9:00-17:30	Closed
FQD26	2 Grovelands Road	RG30 2NY	Reading	Grovelands Pharmacy	9:00-13:00	Closed
FRF51	Manichem Ltd	RG2 0NH	Reading	Manichem Online	Closed	Closed
FLR49	60 Wensley Road	RG1 6DJ	Reading	Newdays Pharmacy	9:00-13:00	Closed
FRP45	231 Shinfield Road	RG2 8HD	Reading	Vantage Chemist	9:00-17:00	Closed
FLK26	104A Oxford Road	RG1 7LL	Reading	Saood Pharmacy	Closed	Closed
FHF90	36 Coronation Square	RG30 3QN	Reading	Southcote Pharmacy	9:00-13:00	Closed
FGX83	55-59 Broad Street	RG1 2AF	Reading	Superdrug Pharmacy	9:00-13:30; 14:00-17:30	Closed
FA368	Tesco Extra	RG30 1AH	Reading	Tesco Instore Pharmacy	8:00-21:00	10:00-16:00

FPG88	Tesco Extra	RG1 8DF	Reading	Tesco Instore Pharmacy	6:30-22:00	10:00-16:00
FEX35	45 St Martins Precinct Church Street	RG4 8BA	Caversham	Boots the Chemists	9:00-17:30	Closed
FMJ89	59A Hemdean Road	RG4 7SS	Caversham	Rowlands Pharmacy	Closed	Closed
FC305	30 Church Street	RG4 8AU	Caversham	Day Lewis Rankin Pharmacy	9:00-13:00	Closed
FA597	122 Henley Road	RG4 6DH	Caversham	Markand Pharmacy	9:00-13:00; 14:00-18:00	Closed
FT878	5 Cavendish Road	RG4 8XW	Caversham	Lloydspharmacy	9:00-17:00	Closed
FNR10	32 Meadway Precinct	RG30 4AA	Tilehurst	Boots the Chemists	9:00-14:00; 15:00-17:30	Closed
FF110	2a Tylers Place	RG30 6BW	Tilehurst	Lloydspharmacy	9:00-13:00	Closed
FDX71	88-90 School Road	RG31 5AW	Tilehurst	Triangle Pharmacy	9:00-17:30	Closed
FGF17	7 School Road	RG31 5AR	Tilehurst	Tilehurst Pharmacy	9:00-13:00	Closed

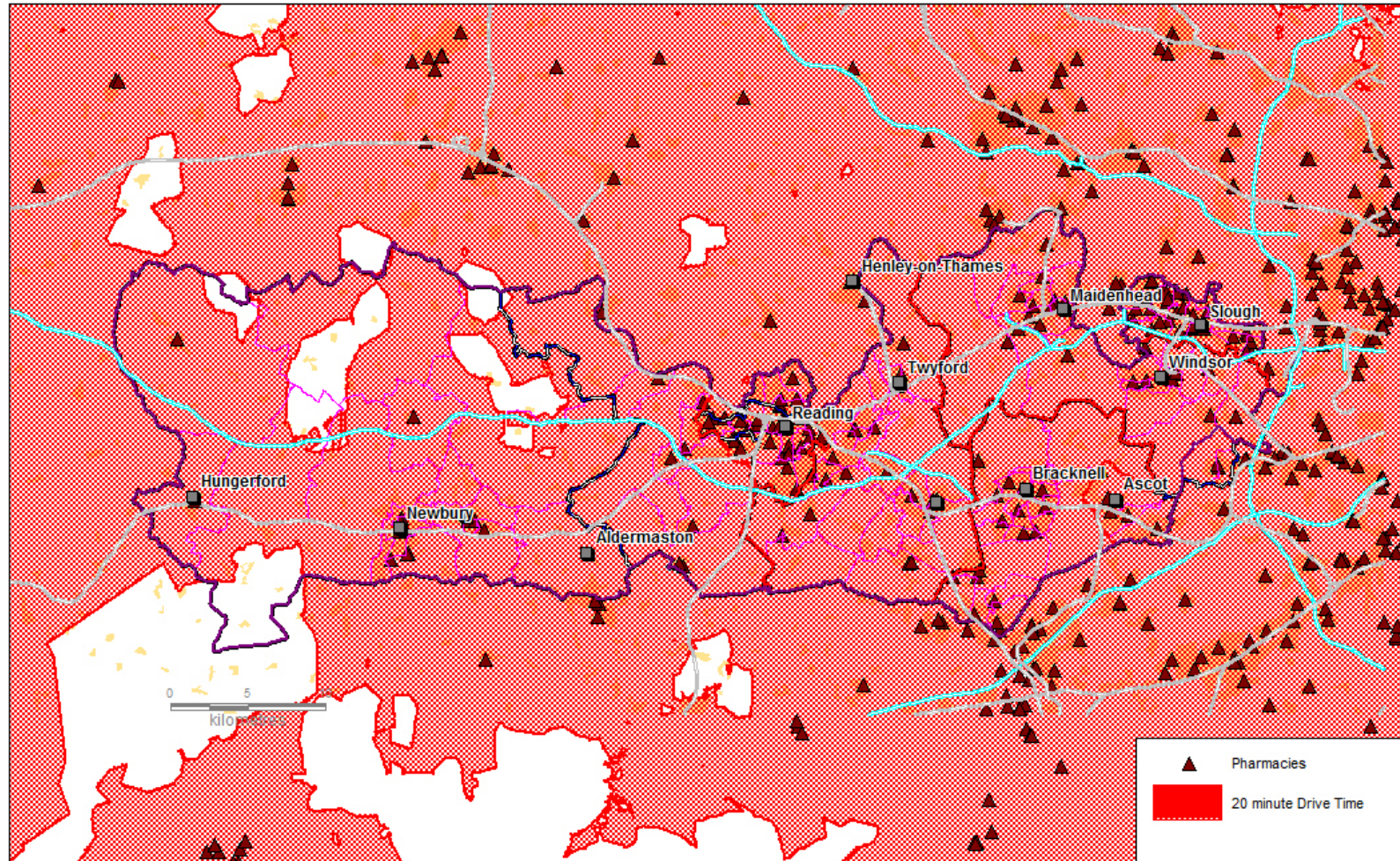
Berkshire - Pharmacy Access



Reproduced from OS data by permission of Ordnance Survey, on behalf of the Controller of Her Majesty's Stationery Office (Licence No. OSKWFG1110), NAVTEQ data by permission of NAVTEQ Corporation Licence No. NVMM0611, NVMM0612) GeoPlan data by permission of Geoplan (Licence No. GPKW9912) © Crown Copyright - 2014 All rights reserved

Berks_PNA_Jul14_v1.wor 14/07/2014 Sid Beauchant BHFT

Berkshire - Pharmacy Access



Reproduced from OS data by permission of Ordnance Survey,
on behalf of the Controller of Her Majesty's Stationery Office (Licence No. OSKWFG1110),
NAVTEQ data by permission of NAVTEQ Corporation Licence No. NVMM0611, NVMM0612)
GeoPlan data by permission of Geoplan (Licence No. GPKW9912)
© Crown Copyright - 2014 All rights reserved

Berks_PNA_Apr14_v1.wor 15/05/2014 Sid Beauchant BHFT

Map showing pharmacies and dispensing doctors outside Reading which shows improved access

